


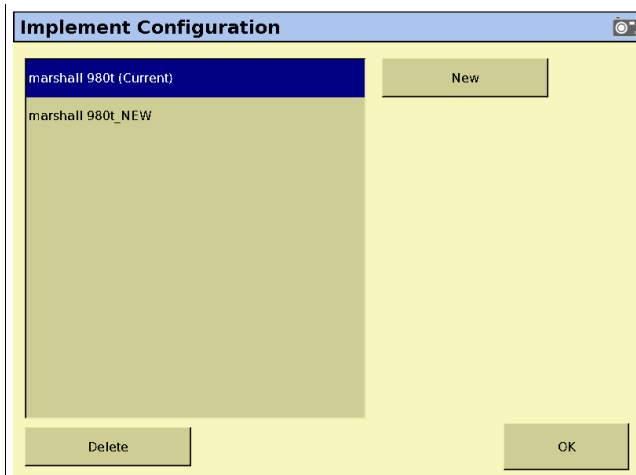
## Restoring FM1000 Configuration

Each component of the FM1000 can be restored individually as required. This may be when moving the system from one machine to another or returning to settings that worked when attempting to make changes.

If the configuration that you want to use is saved on a USB, make sure that you upload it to the FM1000 before attempting to load it. See the section titled **Upload from USB Drive**.

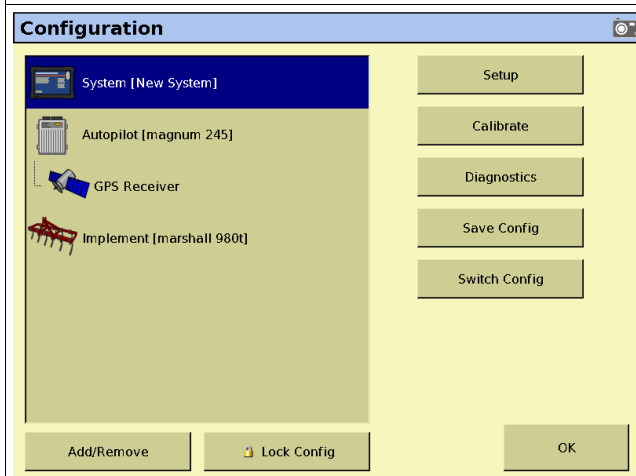
	<ul style="list-style-type: none"> <li>• Select '<b>Setting</b>' on the top Right of the Home Screen.</li> </ul> 
	<p>Each item in the list needs to be restored individually.</p> <p>When the item is indented (i.e GPS Receiver) its settings are saved with the higher level settings.</p> <ul style="list-style-type: none"> <li>• Highlight in Blue the item to select it.</li> <li>• Select '<b>Switch Config</b>'.</li> </ul> <p><b>NOTE:</b> If this button is locked you will be prompted for the <u>Administration Password – 2009</u>.</p> <p>A screen will appear listing all saved Configurations for the selected component.</p>

## Boekeman Machinery FM1000 Essentials



- Select the '**Configuration**' that is to be loaded.
- Select '**OK**'.

This screen also provides the option to create a new configuration or delete any old configurations.



This procedure needs to be repeated for each component that needs to have its Configuration changed.

- Select '**OK**' to return to the **Home Screen**.

Boekeman  
Machinery  
Precision Farming