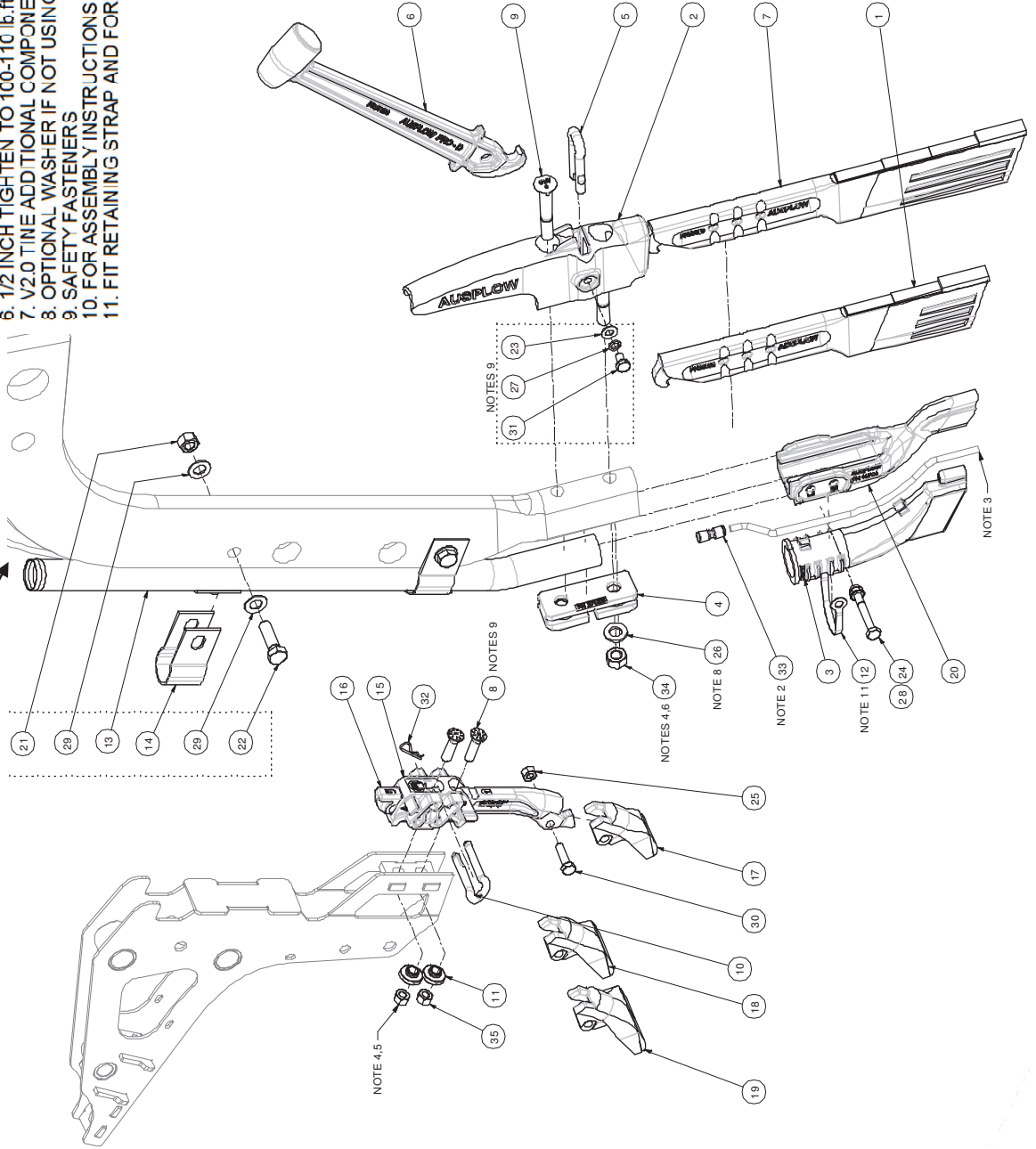


- NOTES:
1. GREY LINES ARE REFERENCE ONLY.
 2. LIQUID KIT OPTIONAL.
 3. PART OF LIQUID KIT AS CUT FROM 6mm TUBE.
 4. USE THREAD LOCKING COMPOUND.
 5. 3/8 INCH TIGHTEN TO 40-45 lb.ft (54-61 Nm).
 6. 1/2 INCH TIGHTEN TO 100-110 lb.ft (135-149 Nm).
 7. V2.0 TINE ADDITIONAL COMPONENTS REQUIRED.
 8. OPTIONAL WASHER IF NOT USING FERT SHIELD.
 9. SAFETY FASTENERS
 10. FOR ASSEMBLY INSTRUCTIONS SEE AUSPLOW.COM.AU.
 11. FIT RETAINING STRAP AND FORM BY HAND.

#10675 1/4" Black Nylon Tubing
(sold per metre)



Pro-D Tine Assembly Parts

Item #	Qty	Part No	Description
1	1	26992	PRO D BLADE 5-7 ASSY
2	1	26995	BLADE ADAPTOR
3	1	27014	PRO D FERTILISER BOOT
4	1	27018	PRO D FERTILISER SHIELD ADAPTOR
5	1	27055	PRO D RETAINING U PIN 10mm
6	1	27056	PRO D PIN REMOVAL TOOL
7	1	27059	PRO D BLADE 7-9 ASSY
8	2	27101	PLOW BOLT 3/8" UNC x 1.375"
9	2	27110	BOLT 1/2" UNC DOUBLE NIB NECK
10	1	27136	PRO D RETAINING U PIN 8mm
11	2	27148	PRO D CLOSING TOOL WASHER
12	1	27520	FERTILISER BOOT RETAINING STRAP
13	1	11367	FERTILISER TUBE 32mm OD SS
14	2	11369	CLAMP FERTILISER TUBE 32mm
15	1	15780	PRO D CLOSING TOOL ADAPTER
16	1	15787	PRO D CLOSING TOOL STEM
17	1	15788	PRO D CLOSING TOOL TIP 30mm
18	1	15789	PRO D CLOSING TOOL TIP 45mm
19	1	15790	PRO-D CLOSING TOOL TIP 60mm
20	1	15794	PRO D FERTILISER SHIELD
21	2	09009	NUT M12 - Conelock
22	2	09011	SCREW HEX M12 x 40mm
23	1	09017	WASHER FLAT M8
24	1	09018	BOLT M8 x 60mm
25	1	09019	NUT M8 - Conelock
26	2	09031	WASHER FLAT M12
27	1	09066	WASHER SPRING M8
28	1	09080	HEX NUT M8 - Nylock
29	4	09108	WASHER FLAT M12 SS
30	1	09485	SCREW HEX M8 x 30mm
31	1	09733	SCREW HEX M8 x 12mm
32	1	09734	R-CLIP 1.6 x 33mm LG
33	1	09735	STRAIGHT COUPLING 6mm TO 6mm PUSH ON
34	2	09763	NUT 1/2" UNC - Conelock
35	2	09764	NUT 3/8" UNC - Conelock