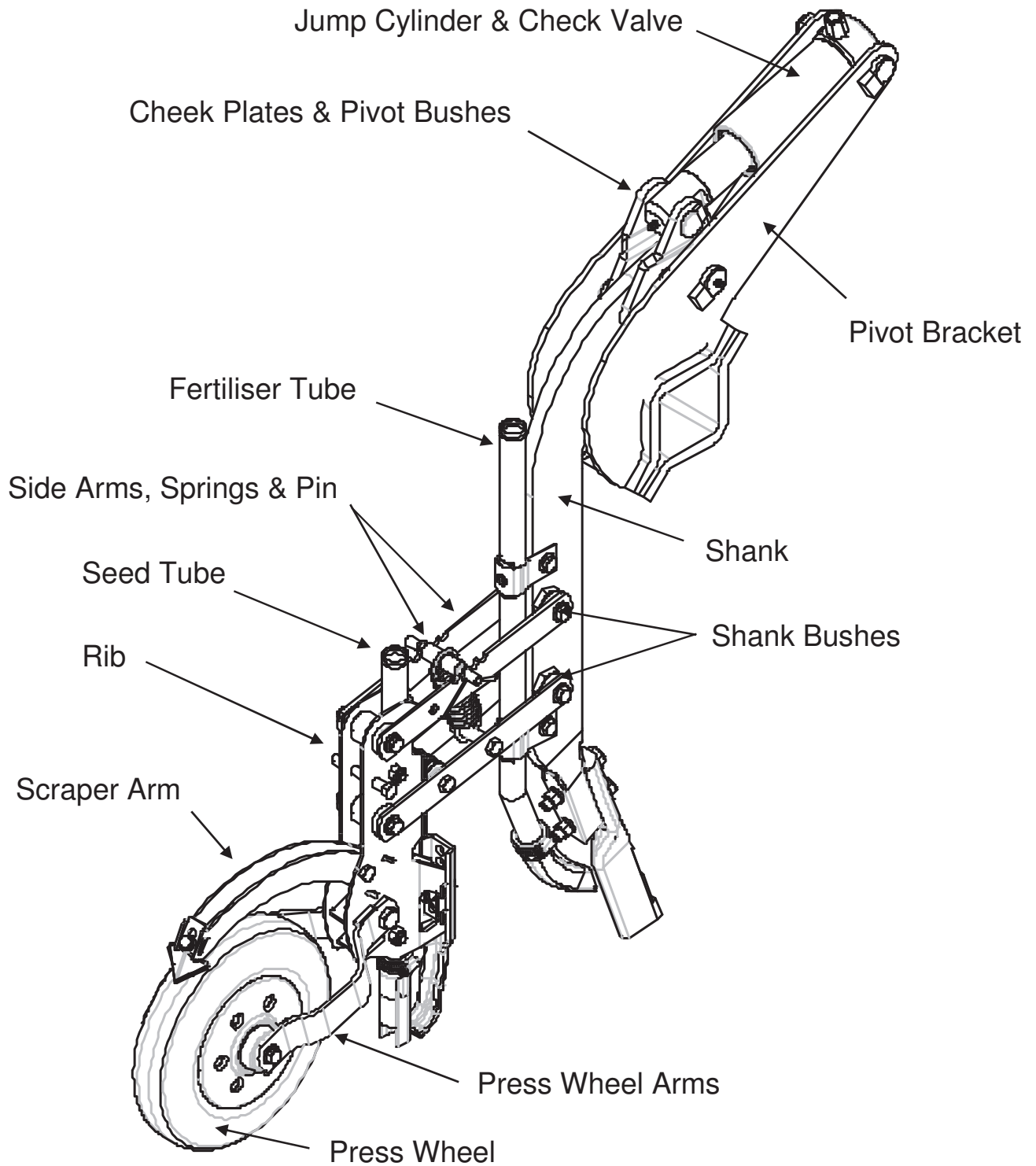
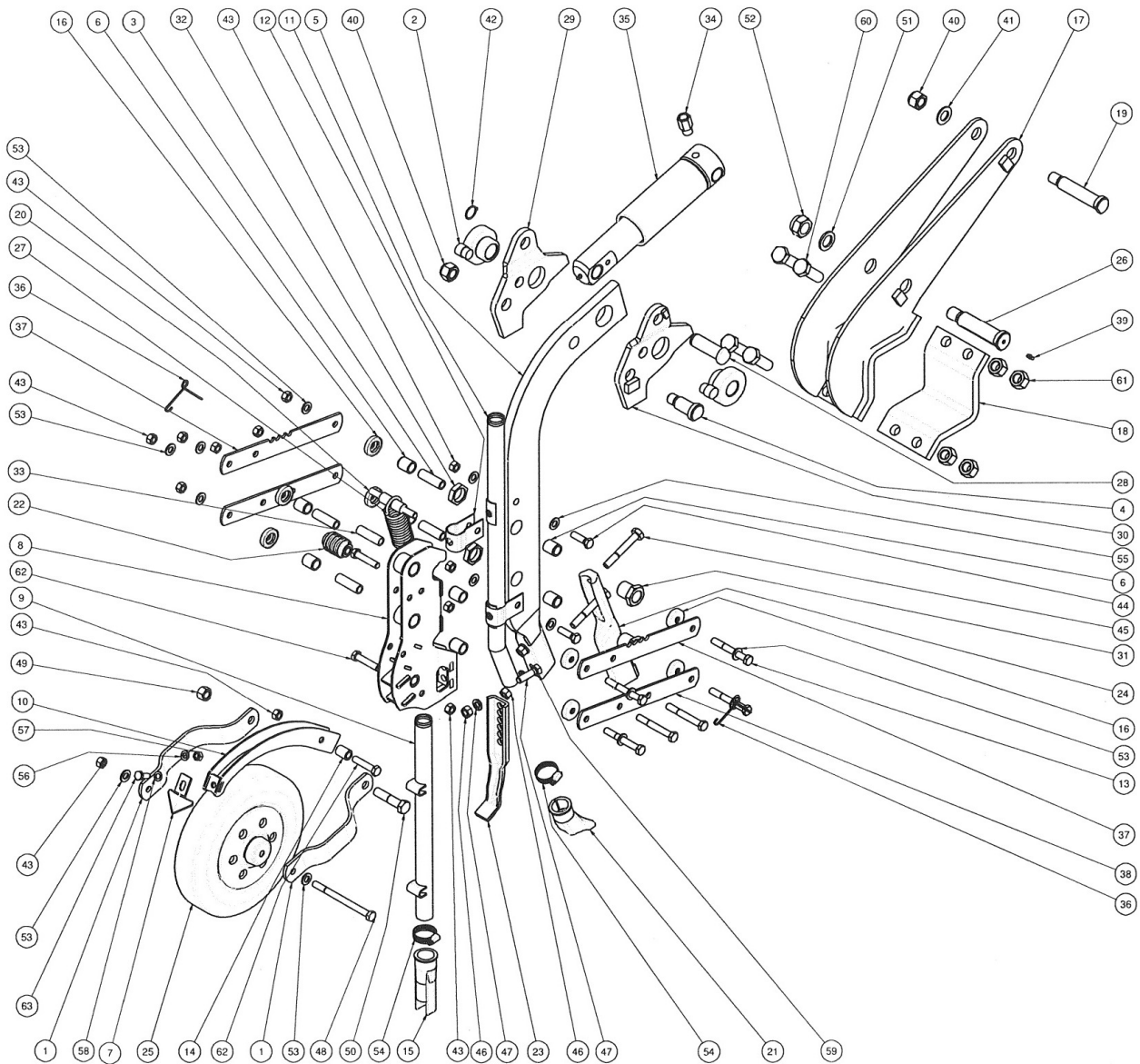


4.2 Tine Assembly V3



4.3 Tine Assembly V3 - Parts Listing



Version 3 Tine Parts Listing

Item	Qty	Part No	Description
1	2	11131	PRESS WHEEL ARM STANDARD CURVED
2	2	1125	BUSH ASSY - SHANK PIVOT
3	4	1130	BUSH - SINTERED NICKEL
4	1	1131	PIN - 25 x64 - SHANK SUPPORT
5	1	1132	SHANK
6	8	1133	BUSH - SINTERED NICKEL
7	1	11345	SCRAPER SWEEP TYPE - 50mm ASSEMBLY
8	1	11350	RIB WELDMENT
9	1	11351	SEED TUBE WELDMENT
10	1	11365	SCRAPER ARM ASSEMBLY 300 STD WHEEL
11	1	11367	FERTILISER TUBE WELDMENT
12	2	11369	CLAMP- FERTILISER TUBE
13	6	1138	BOLT-M12x90 - ZP
14	1	11428	SPACER
15	1	11446	SEED ROOT
16	8	1150	SEAL CAP ASSEMBLY
17	1	1160	PIVOT BRACKET ASSY
18	1	1162	CLAMP PLATE- PIVOT BRACKET
19	1	1179	PIN - JUMP CYL BASE
20	1	1217	PIN - SPRING HOLDER
21	1	12344	FERTILISER TUBE BOOT
22	1	12788	STOPPER ASSY
23	1	12813	CLOSING TOOL 30mm ASSY
24	1	1288	BLADE ASSY - DBA 27-130 (7 INCH)
25	1	1352	PRESS WHEEL- 50mm
26	1	1368	PIN SHANK PIVOT - DIA30 x LGTH102
27	1	1389	SPRING - TENSION 5.6 x 42 x 120
28	1	1436	PIN - 25 x75 JUMP CYL ROD END
29	1	1437	CHEEK PLATE - LEFT
30	1	1438	CHEEK PLATE ASSEMBLY - RIGHT
31	2	1463	HOUSING SHANK BUSH
32	2	1464	NUT-SHANK BUSH HOUSING
33	1	1495	SPACER BUSH
34	1	6016	VALVE - CUSHION RETURN
35	1	6017	JUMP CYLINDER ASSEMBLY
36	2	8141	RETAINING SPRING
37	2	8925	SIDE ARM - UPPER 330
38	2	8926	SIDE ARM - LOWER 330
39	1	9001	GREASE NIPPLE 1/4 BSW
40	2	9002	NUT - M20 - ZP - CONELOCK
41	1	9003	WASHER-FLAT-M20-ZP
42	1	9007	CIRCLIP-EXTERNAL-25X1.2mm
43	12	9009	NUT M12 C8 ZP CONELOCK
44	2	9011	BOLT M12x40 - G8.8 - ZP
45	2	9012	BOLT 1/2"UNC x 3 1/2" ZP
46	3	9014	NUT-1/2"UNC - ZP
47	3	9015	WASHER SPRING -1/2"- ZP
48	1	9016	BOLT-M12x150 - ZP
49	1	9024	NUT-M16 - ZP - CONELOCK
50	1	9025	BOLT-M16 6x 70 - ZP
51	1	9029	WASHER FLAT-M24 - ZP
52	1	9030	NUT-M24 - ZP - NYLOCK
53	13	9031	Washer - Flat - M12 H/T ZP
54	2	9086	HOSE CLAMP 19-44 WORM DRIVE-SS
55	4	9108	WASHER FLAT - M12 - SS 316
56	1	9130	WASHER SPRING - M10
57	1	9131	NUT - M10 - ZP
58	1	9141	WASHER FLAT M10 - ZP
59	1	9155	BOLT 1/2 x 1 3/4" UNC G8 ZP
60	4	9388	BOLT M20x60 C10.9 ZP
61	4	9389	HEX NUT M20 C10.9 ZP
62	3	9415	BOLT M12x55 GR8.8 ZP
63	1	9430	BOLT M10x25 C8.8 ZP